



Vestil Manufacturing Company

2999 North Wayne Street, P.O. Box 507, Angola, IN 46703

Telephone: (260) 665-7586 -or- Toll Free (800) 348-0868

Fax: (260) 665-1339

Website: www.vestil.com e-mail: info@vestil.com

D-GAL Series Galvanized Hoppers



Receiving Instructions

After delivery, remove the packaging from the product. Inspect the product closely to determine whether it sustained damage during transport. If damage is discovered, record a complete description of it on the bill of lading. If the product is undamaged, discard the packaging.

NOTE: The end-user is solely responsible for confirming that product design, use, and maintenance comply with laws, regulations, codes, and mandatory standards applied where the product is used.

Technical Service & Replacement Parts

For answers to questions not addressed in these instructions and to order replacement parts, labels, and accessories, call our Technical Service and Parts Department at (260) 665-7586. The department can also be contacted online at <https://www.vestil.com/page-parts-request.php>.

Electronic Copies of Instruction Manuals

Additional copies of this manual may be downloaded from <https://www.vestil.com/page-manuals.php>

Table of Contents		Page
National Standards.....		2
Specifications and Options.....		2-3
D-25-HD-GAL Hoppers Exploded View & Bill of Materials.....		4
D-33-HD-GAL Hoppers Exploded View and Bill of Materials.....		5
D-50-HD-GAL Hoppers exploded view & Bill of Materials.....		6
D-75-HD-GAL Hoppers Exploded View and Bill of Materials.....		7
D-100-HD-GAL Hoppers Exploded View & Bill of Materials.....		8
D-150-HD-GAL Hoppers Exploded View & Bill of Materials.....		9
D-200-HD-GAL Hoppers Exploded View & Bill of Materials.....		10
D-250-HD-GAL Hoppers Exploded View & Bill of Materials.....		11
D-300-HD-GAL Hoppers Exploded View & Bill of Materials.....		12
Signal Words.....		13
Safety Instructions.....		13
Loading the Chute.....		14
Using the Hopper.....		14-15
Stacking Hoppers.....		15
Record of Satisfactory Condition.....		15
Inspections & Maintenance.....		15
Labeling Diagram.....		16
Limited Warranty.....		17

NATIONAL STANDARDS

US OSHA Rule 1910.178 (29 CFR 1910.178; the "Rule") classifies this device as a "front- end attachment" whenever it is mounted on a lift truck. The Rule incorporates American National Standard ANSI/ITSDF B56.1 (the "Standard"). The Standard is published by the Industrial Truck Standards Development Foundation on its website (www.itsdf.org) where it is freely downloadable at <http://www.itsdf.org/cue/b56-standards.html>. Acquire a copy of the Standard *before putting this device into service*. Apply all relevant parts of Part II: For the User. If instructions provided in this manual apparently conflict with the Standard, then apply the instructions in the Standard. Vestil requests that you immediately share any conflicts you discover with its [TECHNICAL SERVICE](#) personnel. Contact information is provided on the cover page of this manual.

SPECIFICATIONS AND OPTIONS

Documents that provide specifications for H-series hoppers are available online to anyone who visits Vestil's website. Specifications include dimensions, net weight, and capacity information. Navigate to <https://www.vestil.com/product.php?FID=449>. Scroll to the *Product Specifications Table* portion of the page. Find the entry for the hopper you purchased and click the button in the "PDF" column that looks like a pencil inside a blue-bordered box. A PDF file will open. This file is the specifications document. Print a copy of the document and keep it with your copy of this manual. The following is an exemplar specifications document for model D-25-HD-GAL.

GALVANIZED SELF-DUMPING STEEL HOPPER W/ BUMPER RELEASE - D-25-HD-GAL APPROX WEIGHT: 410.42 lbs.
DOES NOT INCLUDE WEIGHT OF POWER OR PACKAGING!!!

*** ANY ADDITIONS, DELETIONS, OR OMISSIONS MUST BE CORRECTED ON THIS DRAWING AS THIS DRAWING WILL BE CONSIDERED ALL INCLUSIVE ***
 ALL GRAPHICS PROVIDED ARE FOR REFERENCE ONLY. IF CERTAIN DIMENSIONS ARE CRITICAL PLEASE VERIFY THOSE DIMENSIONS WITH YOUR SALESPERSON

WARNING THIS PRODUCT CAN EXPOSE YOU TO LEAD, WHICH IS KNOWN TO THE STATE OF CALIFORNIA TO CAUSE CANCER AND BIRTH DEFECTS OR OTHER REPRODUCTIVE HARM. FOR MORE INFORMATION GO TO www.p65warnings.ca.gov**

STANDARD FEATURES
 MODEL NUMBER: D-25-HD-GAL
 VOLUME: 1/4 CU. YDS.
 CAPACITY: 6,000 LBS.
 OVERALL WIDTH: 26"
 OVERALL LENGTH: 51 7/8"
 OVERALL HEIGHT: 38 1/16"
 PULL CABLE IS AT LEAST: 48"
 FINISH: HOT DIP GALVANIZED

SPECIAL FEATURES
 NONE

NEVER EXCEED LOAD CENTER RATING PER FORK TRUCK MANUFACTURER'S GUIDELINES. DO NOT USE THIS FORK TRUCK ATTACHMENT IF LOAD WILL EXCEED FORK TRUCK MANUFACTURER'S LOAD CENTER RATING.
 APPROX. WEIGHT/ LOST LOAD=410.42 LBS.
 MINIMUM EFFECTIVE THICKNESS= LESS THAN 1"

APPROVAL
 I, THE UNDERSIGNED, AGREE THAT THE PRODUCT AS REPRESENTED SATISFIES DESIGN AND DIMENSION REQUIREMENTS. I ALSO ACKNOWLEDGE MY DUTY TO CONFIRM PRODUCT AND INSTALLATION COMPLIANCE WITH ALL APPLICABLE FEDERAL, STATE AND LOCAL REGULATIONS AND STANDARDS.
ANY MODIFIED UNITS ARE NON-RETURNABLE
 As drawn As marked
 Signed: _____ Date: _____
 Printed Name: _____
 LEAD TIME WILL START UPON RECEIPT OF SIGNED APPROVAL DRAWING

FOR INTERNAL USE ONLY PROJECT SIGN OFF	DISTRIBUTOR'S NAME: VESTIL MANUFACTURING	P.O.# X
SALES	DRAWN BY: SJG	W.O.# X
ENG.	DATE: 2/9/2018	SALES: X
FAB.	REFERENCE: X	SCALE: 1:16
POWER	QUOTED LEAD TIME: X	FILE NAME: 37-007-121-002

ADDITION OF CASTERS MAY CHANGE WEIGHT CAPACITY BASED ON CASTER RATING

[Optional/non-standard] Hopper Features

Options		
Model	Description	Net Weight
LEKP	"Leak proof" welded hopper	5 lb. 2.3kg
D-DPLG-1	1" threaded drain plug located in bottom, left, rear corner; includes leak proof welds	2 lb. 0.9kg
D-DPLG-2	2" threaded drain plug located in bottom, left, rear corner; includes leak proof welds	2 lb. 0.9kg
LUG	4 welded lifting lugs (around perimeter of hopper mouth)	23 lb. 10.5kg
D-TILT	Sideways chute dumping configuration; D-75-LD and D-100-LD models only	130 lb. 59.1kg

[Optional] Heavy-duty polyethylene lids

Lid Model	Parts	Description	Fits Hopper Models	Net Weight
PLID-D-25	37-024-087-002	Plastic lid	D-25-LD, D-25-MD, D-25-HD	16 lb. 7.3kg
	37-112-028	Prop rod / hinge pin		
	37-016-034	Bracket, Lid hinge, right		
	37-016-033	Bracket, lid hinge, left		
PLID-D-33	37-024-087-002	Plastic lid	D-33-LD, D-33-MD, D-33-HD	16 lb. 7.3kg
	37-112-028	Prop rod / hinge pin		
	37-016-034	Bracket, Lid hinge, right		
	37-016-033	Bracket, lid hinge, left		
PLID-D-50	37-024-087-001	Plastic lid	D-50-LD, D-50-MD, D-50-HD	21 lb. 9.5kg
	37-112-029	Prop rod / hinge pin		
	37-016-034	Bracket, Lid hinge, right		
	37-016-033	Bracket, lid hinge, left		
PLID-D-75	37-024-086-002	Plastic lid	D-75-LD, D-75-MD, D-75-HD	22 lb. 10kg
	37-112-030	Prop rod / hinge pin		
	37-016-034	Bracket, Lid hinge, right		
	37-016-033	Bracket, lid hinge, left		
PLID-D-100	37-024-086-001	Plastic lid	D-100-LD, D-100-MD, D-100-HD	28 lb. 12.7kg
	37-112-031	Prop rod / hinge pin		
	37-016-034	Bracket, Lid hinge, right		
	37-016-033	Bracket, lid hinge, left		
PLID-D-150	37-024-085-004	Plastic lid	D-150-LD, D-150-MD, D-150-HD	33 lb. 15kg
	37-112-032	Prop rod / hinge pin		
	37-016-034	Bracket, Lid hinge, right		
	37-016-033	Bracket, lid hinge, left		
PLID-D-200	37-024-089	Plastic lid	D-200-LD, D-200-MD, D-200-HD	58 lb. 26.4kg
	37-112-033	Prop rod / hinge pin		
	37-016-034	Bracket, Lid hinge, right		
	37-016-033	Bracket, lid hinge, left		
PLID-D-250	37-024-085-002	Plastic lid	D-250-LD, D-250-MD, D-250-HD	51 lb. 23.2kg
	37-112-034	Prop rod / hinge pin		
	37-016-034	Bracket, Lid hinge, right		
	37-016-033	Bracket, lid hinge, left		
PLID-D-300	37-024-085-001	Plastic lid	D-300-LD, D-300-MD, D-300-HD	61 lb. 27.7kg
	37-112-035	Prop rod / hinge pin		
	37-016-034	Bracket, Lid hinge, right		
	37-016-033	Bracket, lid hinge, left		

[Optional] Caster kits

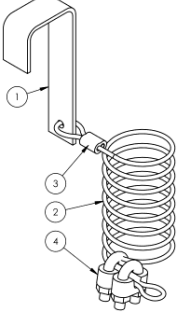
Model	Dimensions	Uniform Capacity	Caster Material	Quantity per Order	Net Weight
HOP-SC6-2	6" x 2" (15¼ x 5.1)cm	4,800 lb. (2,182kg)	Semi-steel	4	33 lb. (15kg)
HOP-SC8-2	8" x 2" (20.3 x 5.1)cm	4,800 lb. (2,182kg)	Semi-steel	4	42 lb. (19.1kg)
HOP-RC6-2	6" x 2" (15¼ x 5.1)cm	2,400 lb. (1,091kg)	Mold-on rubber	4	28 lb. (12.7kg)
HOP-RC8-2	8" x 2" (20.3 x 5.1)cm	2,400 lb. (1,091kg)	Mold-on rubber	4	37 lb. (16.8kg)
HOP-PC6-2	6" x 2" (15¼ x 5.1)cm	4,800 lb. (2,182kg)	Polyurethane on steel	4	33 lb. (15kg)
HOP-PC8-2	8" x 2" (20.3 x 5.1)cm	4,800 lb. (2,182kg)	Polyurethane on steel	4	42 lb. (19.1kg)
HOP-PHC6-2	6" x 2" (15¼ x 5.1)cm	4,800 lb. (2,182kg)	Glass-filled nylon	4	37 lb. (16.8kg)
HOP-PHC8-2	8" x 2" (20.3 x 5.1)cm	4,800 lb. (2,182kg)	Glass-filled nylon	4	54 lb. (24.5kg)
HOP-SC6-2.5	6" x 2½" (15¼ x 6.4)cm	6,000 lb. (2,727kg)	Steel	4	65 lb. (29.5kg)

NOTE: "Uniform capacity" is the maximum weight that each caster set can support, and equals the combined weight of the hopper and its contents. **ONLY select a caster kit that equals or exceeds the maximum rated load of your hopper!**

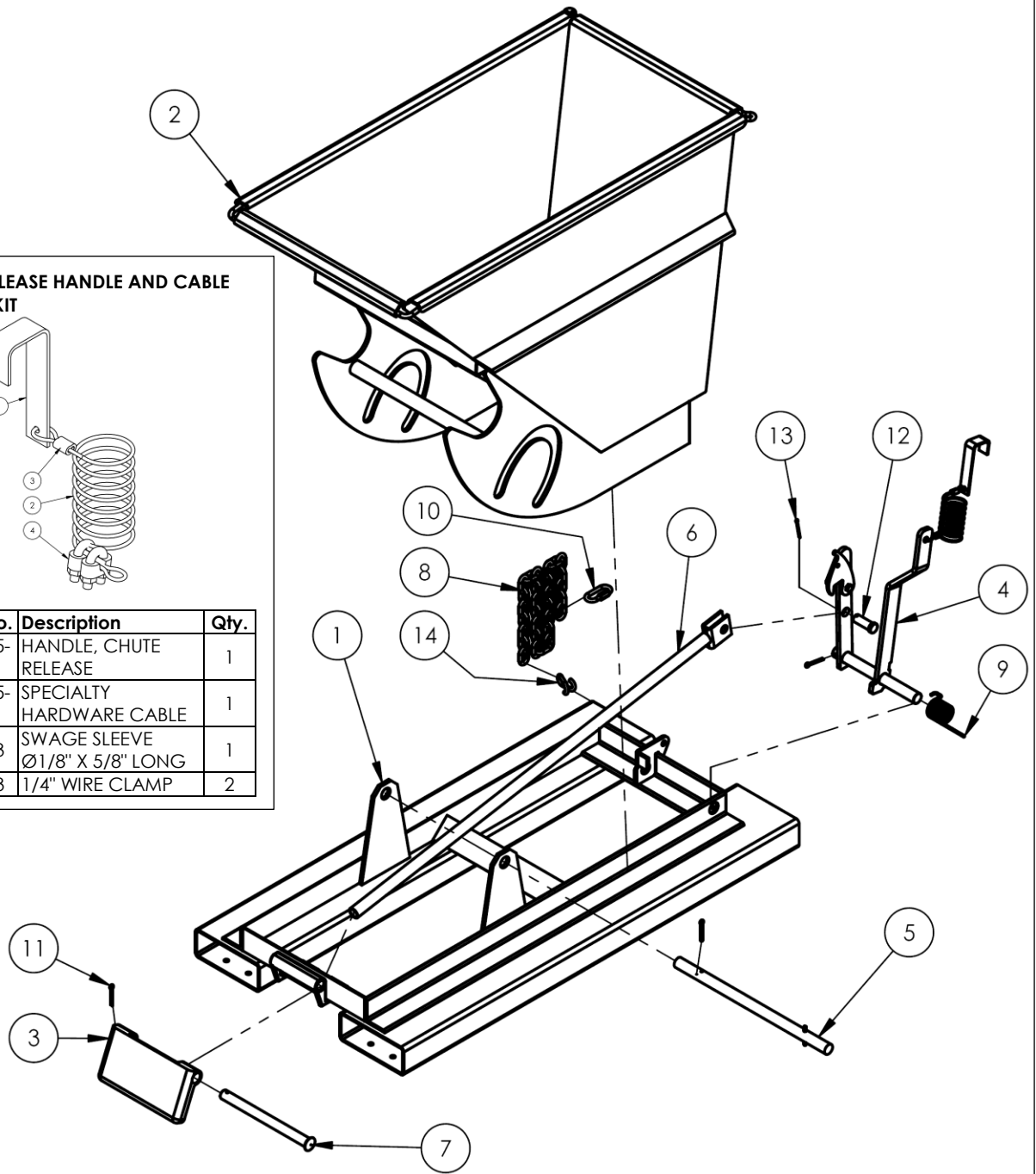
D-25-HD-GAL Hoppers Exploded View & Bill of Materials

37-007-121-002

***37-514-044 RELEASE HANDLE AND CABLE REPLACEMENT KIT**



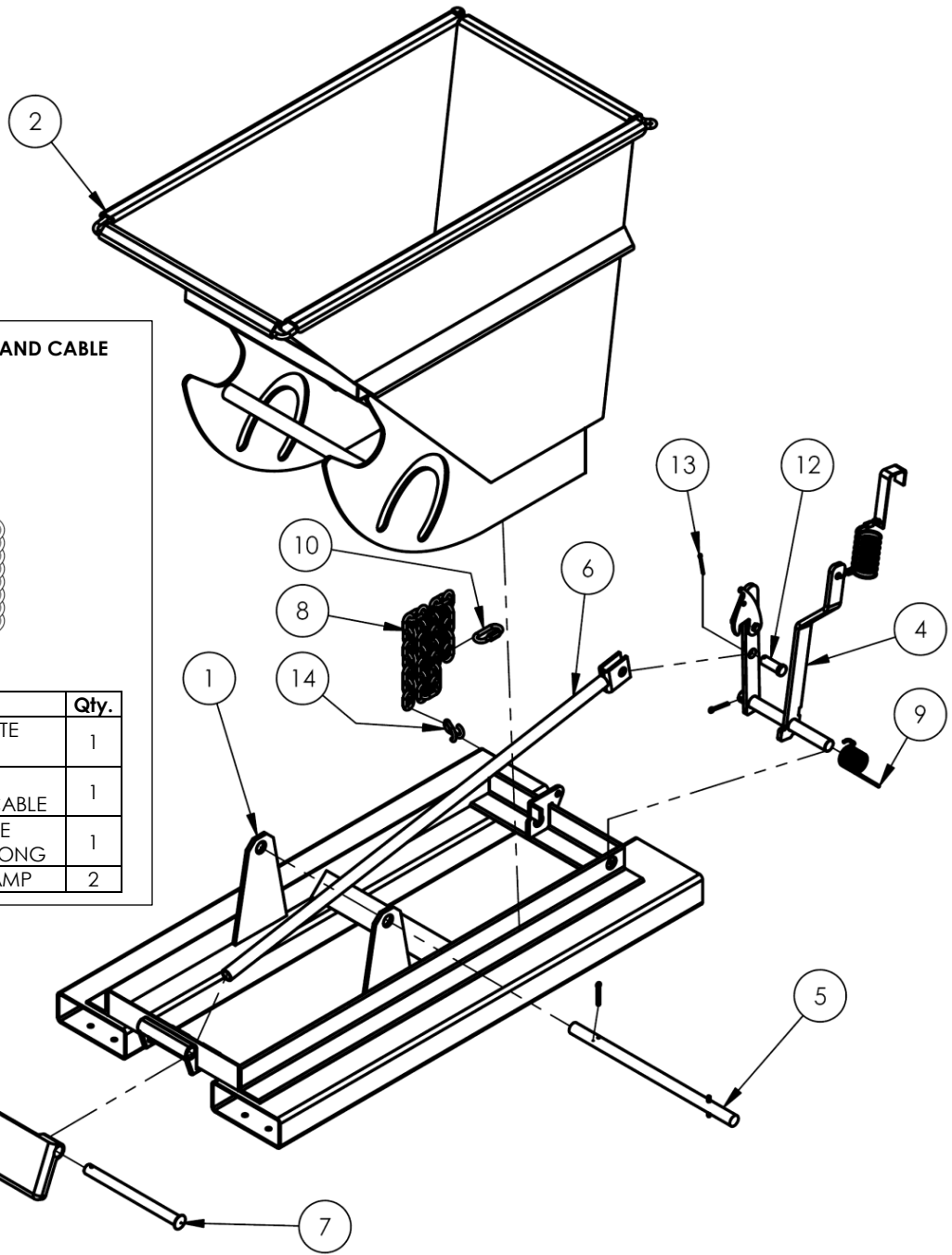
Item	Part no.	Description	Qty.
1	37-025-002	HANDLE, CHUTE RELEASE	1
2	37-145-001	SPECIALTY HARDWARE CABLE	1
3	43383	SWAGE SLEEVE Ø1/8" X 5/8" LONG	1
4	43403	1/4" WIRE CLAMP	2



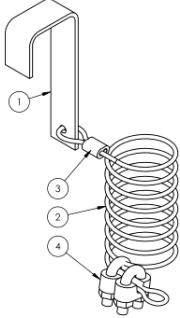
Item	Part no.	Description	Qty.	Item	Part no.	Description	Qty.
1	37-514-007	Frame, weldment, base	1	8	99-145-037	5/16" chain 36" long	1
2	37-545-116	Weldment, chute, galvanized	1	9	37-146-005	Spring, torsion, hopper release	1
3	37-037-040	Bumper release for D-hoppers	1	10	99-145-053	5/16" quick link	1
4	37-537-021	Weldment, lock, release, lever assembly	1	11	65127	Cotter pin, zinc-plated, 3/16" x 2"	3
5	37-612-005	Subassembly, pin, main connection pin	1	12	28-112-043	Pin, 3/4" x 2" retaining clevis	1
6	37-537-007	Release lever rod weldment	1	13	65080	Extended prong cotter pin, zinc finish, 1/8" x 2"	1
7	37-112-006	Pin, bumper plate	1	14	99-145-084	Lap link	1

D-33-HD-GAL Hoppers Exploded View & Bill of Materials

37-007-121-003



***37-514-044 RELEASE HANDLE AND CABLE REPLACEMENT KIT**

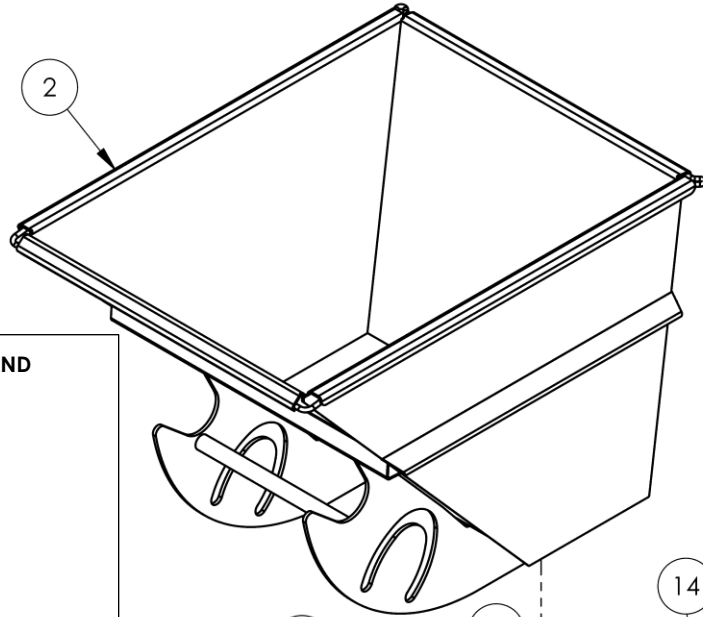


Item	Part no.	Description	Qty.
1	37-025-002	HANDLE, CHUTE RELEASE	1
2	37-145-001	SPECIALTY HARDWARE CABLE	1
3	43383	SWAGE SLEEVE Ø1/8" X 5/8" LONG	1
4	43403	1/4" WIRE CLAMP	2

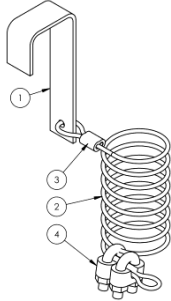
Item	Part no.	Description	Qty.	Item	Part no.	Description	Qty.
1	37-514-007	Frame, weldment, base	1	8	99-145-037	5/16" chain 36" long	1
2	37-545-116	Weldment, chute, galvanized	1	9	37-146-005	Spring, torsion, hopper release	1
3	37-037-040	Bumper release for D-hoppers	1	10	99-145-053	5/16" quick link	1
4	37-537-021	Weldment, lock, release, lever assembly	1	11	65127	Cotter pin, zinc-plated, 3/16" x 2"	3
5	37-612-005	Subassembly, pin, main connection pin	1	12	28-112-043	Pin, 3/4" x 2" retaining clevis	1
6	37-537-007	Release lever rod weldment	1	13	65080	Extended prong cotter pin, zinc finish, 1/8" x 2"	1
7	37-112-006	Pin, bumper plate	1	14	99-145-084	Lap link	1

D-50-HD-GAL Hoppers Exploded View & Bill of Materials

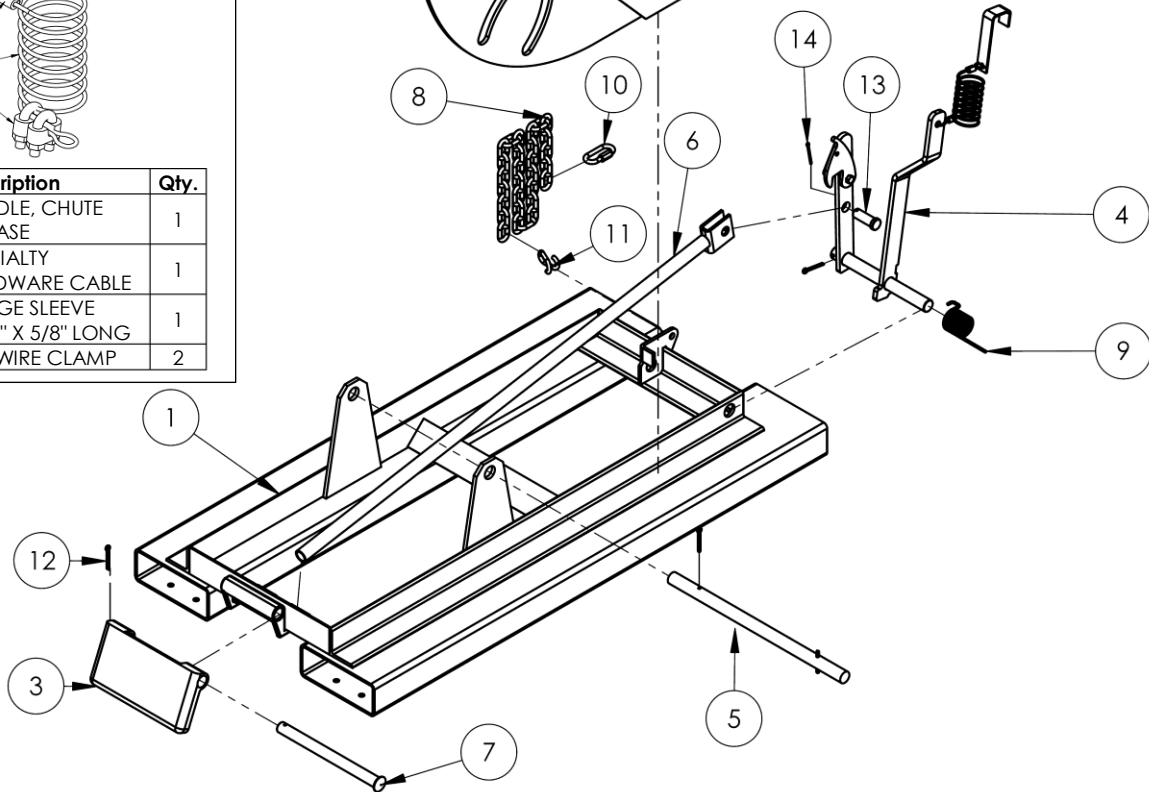
37-007-122-001



***37-514-044 RELEASE HANDLE AND CABLE REPLACEMENT KIT**



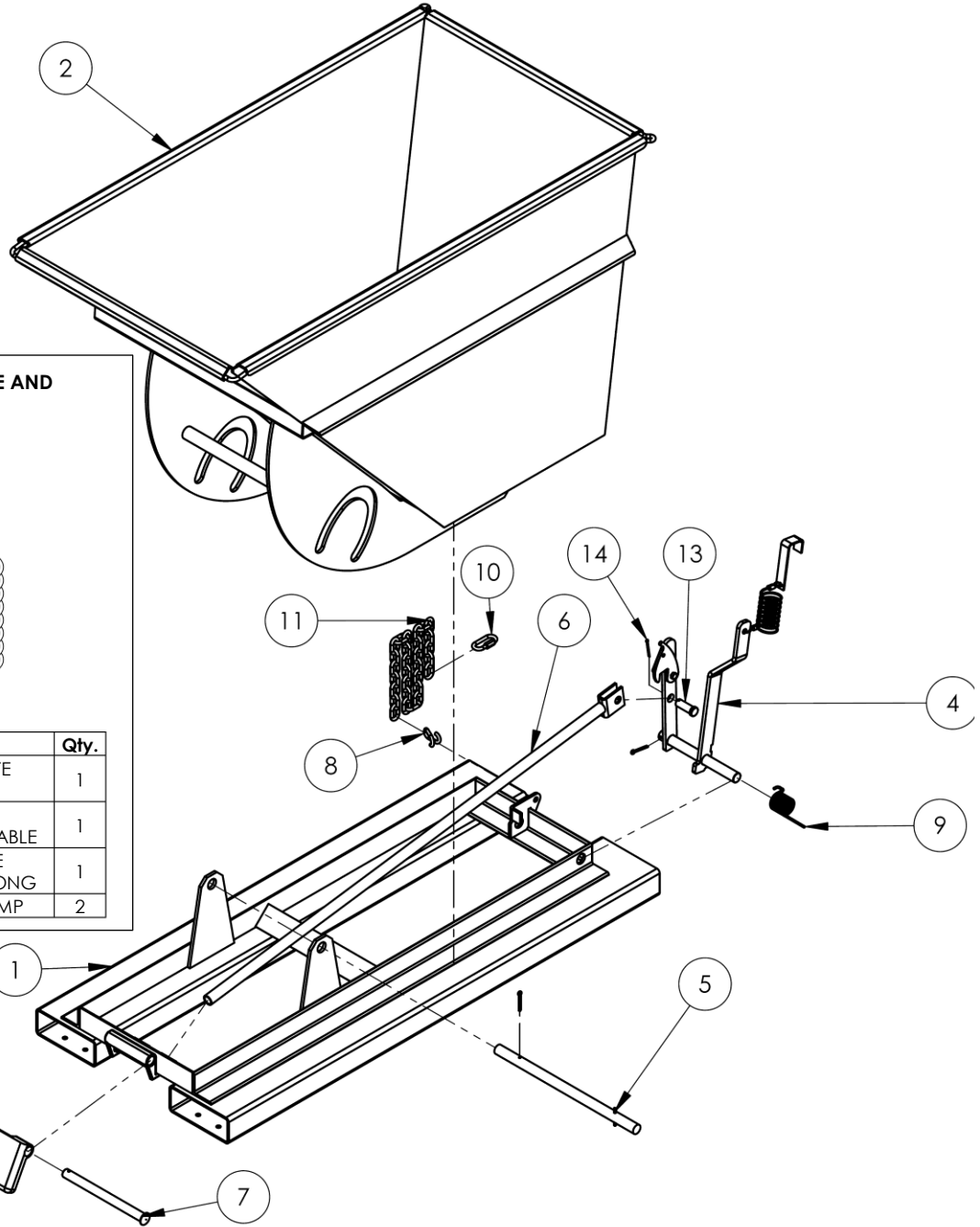
Item	Part no.	Description	Qty.
1	37-025-002	HANDLE, CHUTE RELEASE	1
2	37-145-001	SPECIALTY HARDWARE CABLE	1
3	43383	SWAGE SLEEVE Ø1/8" X 5/8" LONG	1
4	43403	1/4" WIRE CLAMP	2



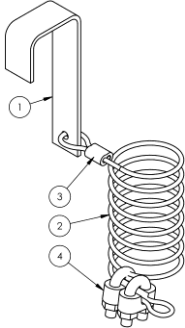
Item	Part no.	Description	Qty.	Item	Part no.	Description	Qty.
1	37-514-007	Weldment, frame, base	1	8	99-145-037	5/16" chain 36" long	1
2	37-545-117	Weldment, chute, galvanized	1	9	37-146-005	Spring, torsion, hopper release	1
3	37-037-040	Bumper release for D-hoppers	1	10	99-145-053	5/16" quick link	1
4	37-537-021	Weldment, lock, release, lever assembly	1	11	99-145-084	Lap link	1
5	37-612-005	Subassembly, pin, main connection pin	1	12	65127	Cotter pin, zinc-plated, 3/16" x 2"	3
6	37-537-007	Release lever rod weldment	1	13	28-112-043	Pin, 3/4" x 2" retaining clevis	1
7	37-112-006	Pin, bumper plate	1	14	65080	Extended prong cotter pin, zinc finish, 1/8" x 2"	1

D-75-HD-GAL Hoppers Exploded View & Bill of Materials

37-007-123-001



***37-514-044 RELEASE HANDLE AND CABLE REPLACEMENT KIT**

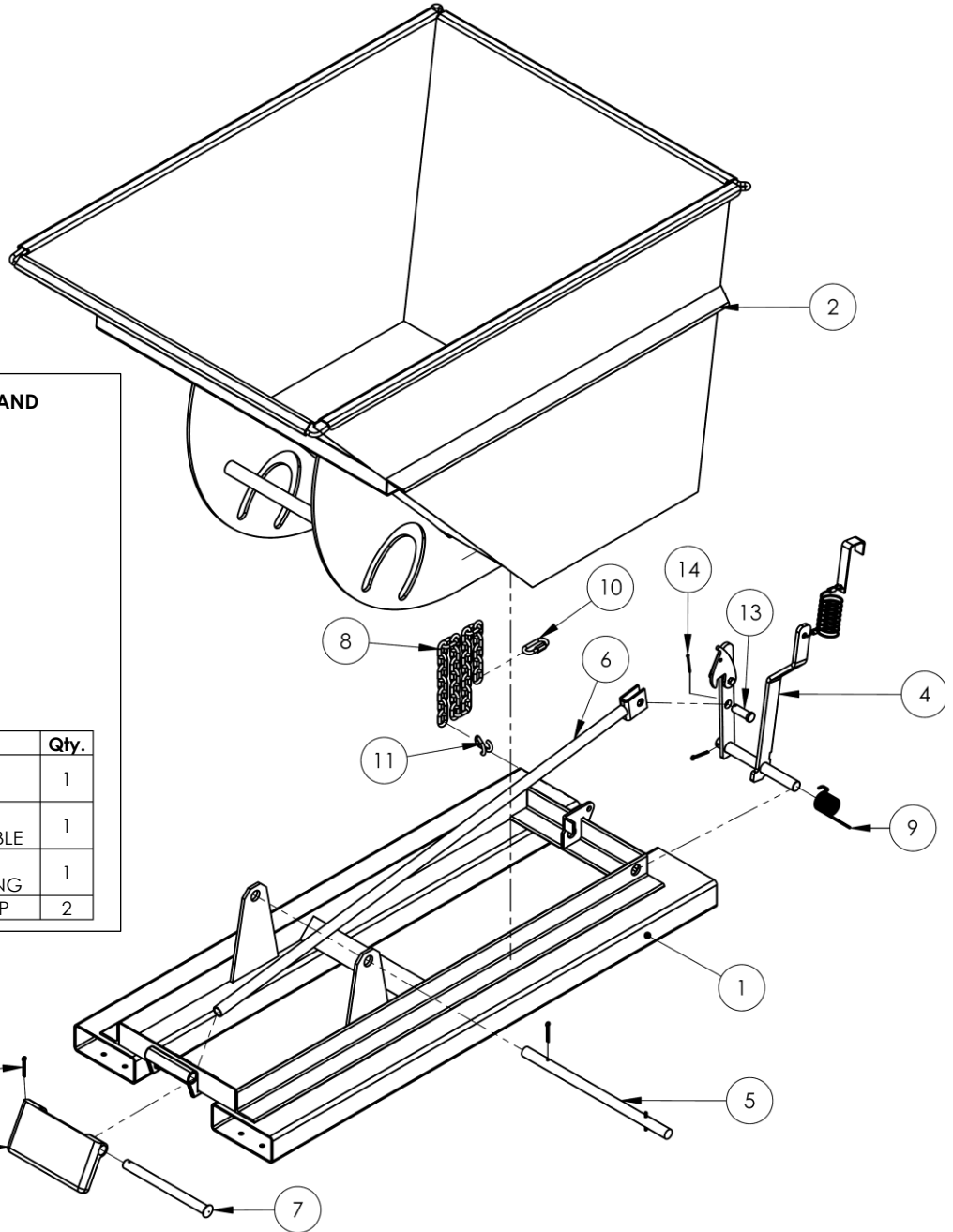


Item	Part no.	Description	Qty.
1	37-025-002	HANDLE, CHUTE RELEASE	1
2	37-145-001	SPECIALTY HARDWARE CABLE	1
3	43383	SWAGE SLEEVE Ø1/8" X 5/8" LONG	1
4	43403	1/4" WIRE CLAMP	2

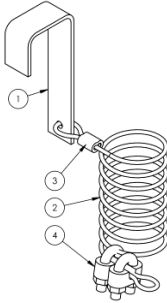
Item	Part no.	Description	Qty.	Item	Part no.	Description	Qty.
1	37-514-008	Weldment, frame, base	1	8	99-145-084	Lap link	1
2	37-545-118	Weldment, chute, galvanized	1	9	37-146-005	Spring, torsion, hopper release	1
3	37-037-040	Bumper release for D-hoppers	1	10	99-145-053	5/16" quick link	1
4	37-537-021	Weldment, lock, release, lever assembly	1	11	99-145-037	5/16" chain 36" long	1
5	37-612-005	Subassembly, pin, main connection pin	1	12	65127	Cotter pin, zinc plated, 3/16" x 2"	3
6	37-537-006	Release lever rod weldment	1	13	28-112-043	Pin, 3/4" x 2" long retaining clevis	1
7	37-112-006	Pin, bumper plate	1	14	65080	Extended prong cotter pin, zinc finish, 1/8" x 2"	1

D-100-HD-GAL Hoppers Exploded View & Bill of Materials

37-007-127



***37-514-044 RELEASE HANDLE AND CABLE REPLACEMENT KIT**

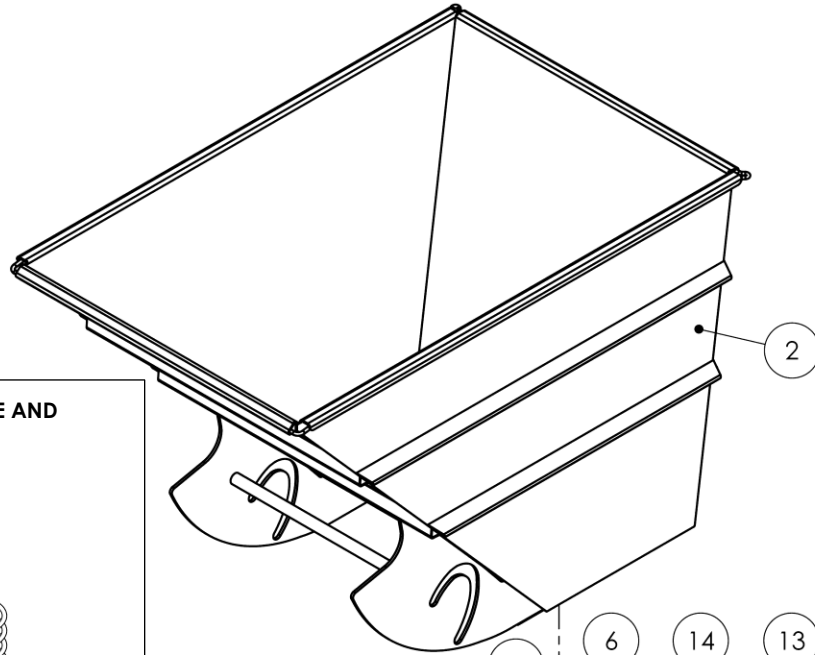


Item	Part no.	Description	Qty.
1	37-025-002	HANDLE, CHUTE RELEASE	1
2	37-145-001	SPECIALTY HARDWARE CABLE	1
3	43383	SWAGE SLEEVE Ø1/8" X 5/8" LONG	1
4	43403	1/4" WIRE CLAMP	2

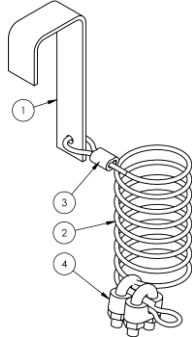
Item	Part no.	Description	Qty.	Item	Part no.	Description	Qty.
1	37-514-008	Weldment, frame, base	1	8	99-145-037	5/16" chain 36" long	1
2	37-545-119	Weldment, chute, galvanized	1	9	37-146-005	Spring, torsion, hopper release	1
3	37-037-040	Bumper release for D-hoppers	1	10	99-145-053	5/16" quick link	1
4	37-537-021	Weldment, lock, release, lever assembly	1	11	99-145-084	Lap link	1
5	37-612-005	Subassembly, pin, main connection pin	1	12	65127	Cotter pin, zinc plated, 3/16" x 2"	3
6	37-537-006	Release lever rod weldment	1	13	28-112-043	Pin, 3/4" x 2" long retaining clevis	1
7	37-112-006	Pin, bumper plate	1	14	65080	Extended prong cotter pin, zinc finish, 1/8" x 2"	1

D-150-HD-GAL Hoppers Exploded View & Bill of Materials

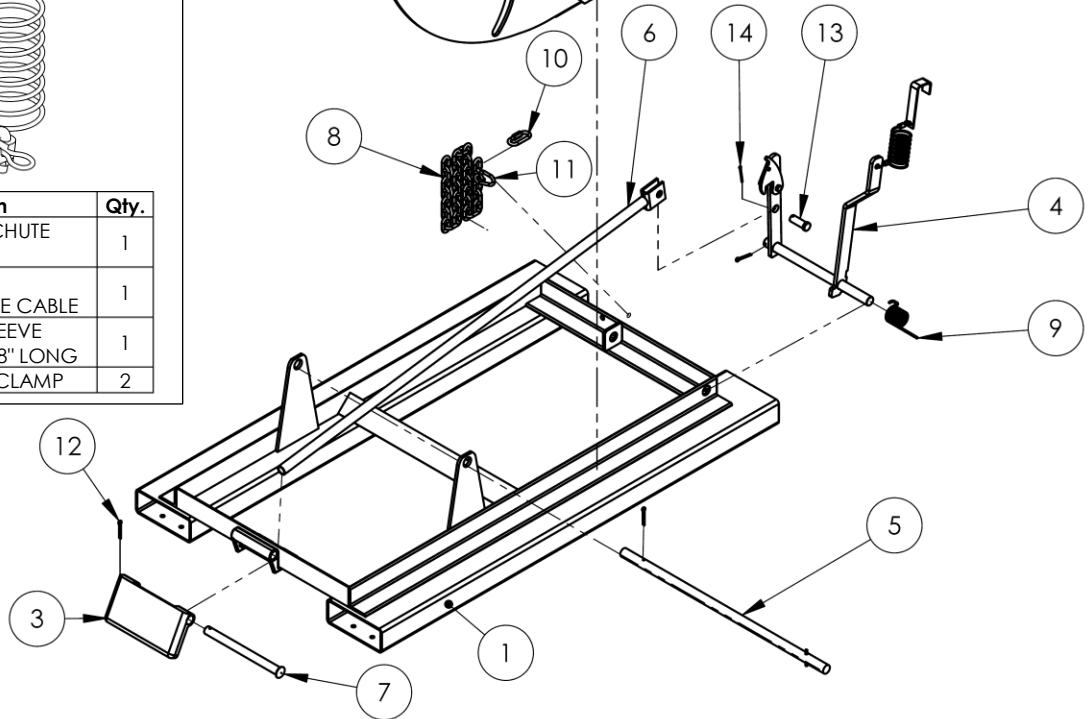
37-007-125-001



***37-514-044 RELEASE HANDLE AND CABLE REPLACEMENT KIT**



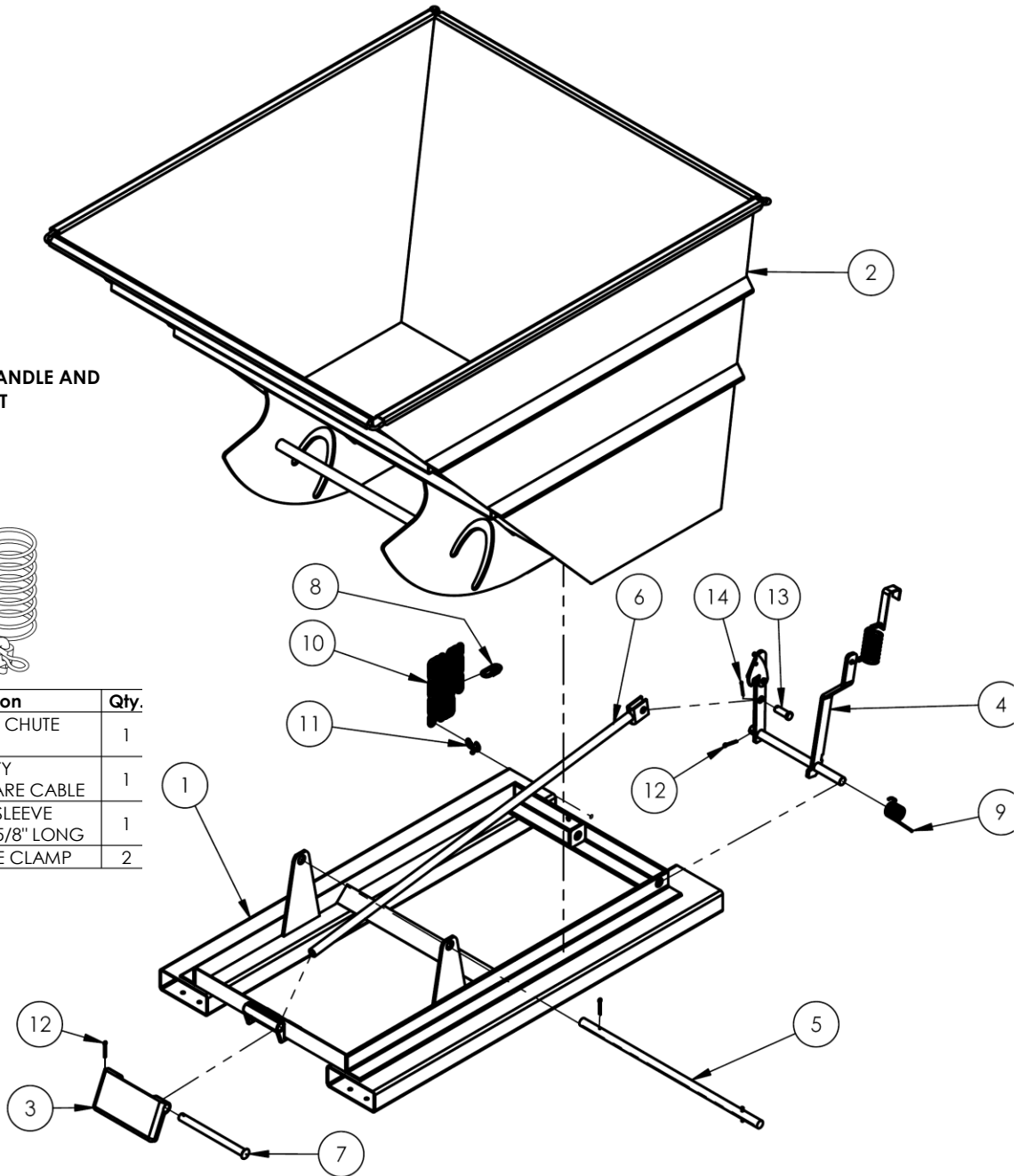
Item	Part no.	Description	Qty.
1	37-025-002	HANDLE, CHUTE RELEASE	1
2	37-145-001	SPECIALTY HARDWARE CABLE	1
3	43383	SWAGE SLEEVE Ø1/8" X 5/8" LONG	1
4	43403	1/4" WIRE CLAMP	2



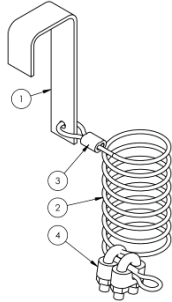
Item	Part no.	Description	Qty.	Item	Part no.	Description	Qty.
1	37-514-004	Weldment, frame, base	1	8	99-145-037	5/16" chain 36" long	1
2	37-545-046	Weldment, chute, galvanized	1	9	37-146-005	Spring, torsion, hopper, release	1
3	37-037-040	Bumper release for D-hoppers	1	10	99-145-053	5/16" quick link	1
4	37-537-020	Weldment, lock, release, lever assembly, hopper	1	11	99-145-084	Lap link	1
5	37-612-006	Subassembly, pin, main connection pin	1	12	65127	Cotter pin, zinc plated, 3/16" x 2"	3
6	37-537-006	Release lever rod weldment	1	13	28-112-043	Pin, 3/4" x 2" retaining clevis	1
7	37-112-006	Pin, bumper plate	1	14	65080	Extended prong cotter pin, zinc finish, 1/8" x 2"	1

D-200-HD-GAL Hoppers Exploded View & Bill of Materials

37-007-128



***37-514-044 RELEASE HANDLE AND CABLE REPLACEMENT KIT**

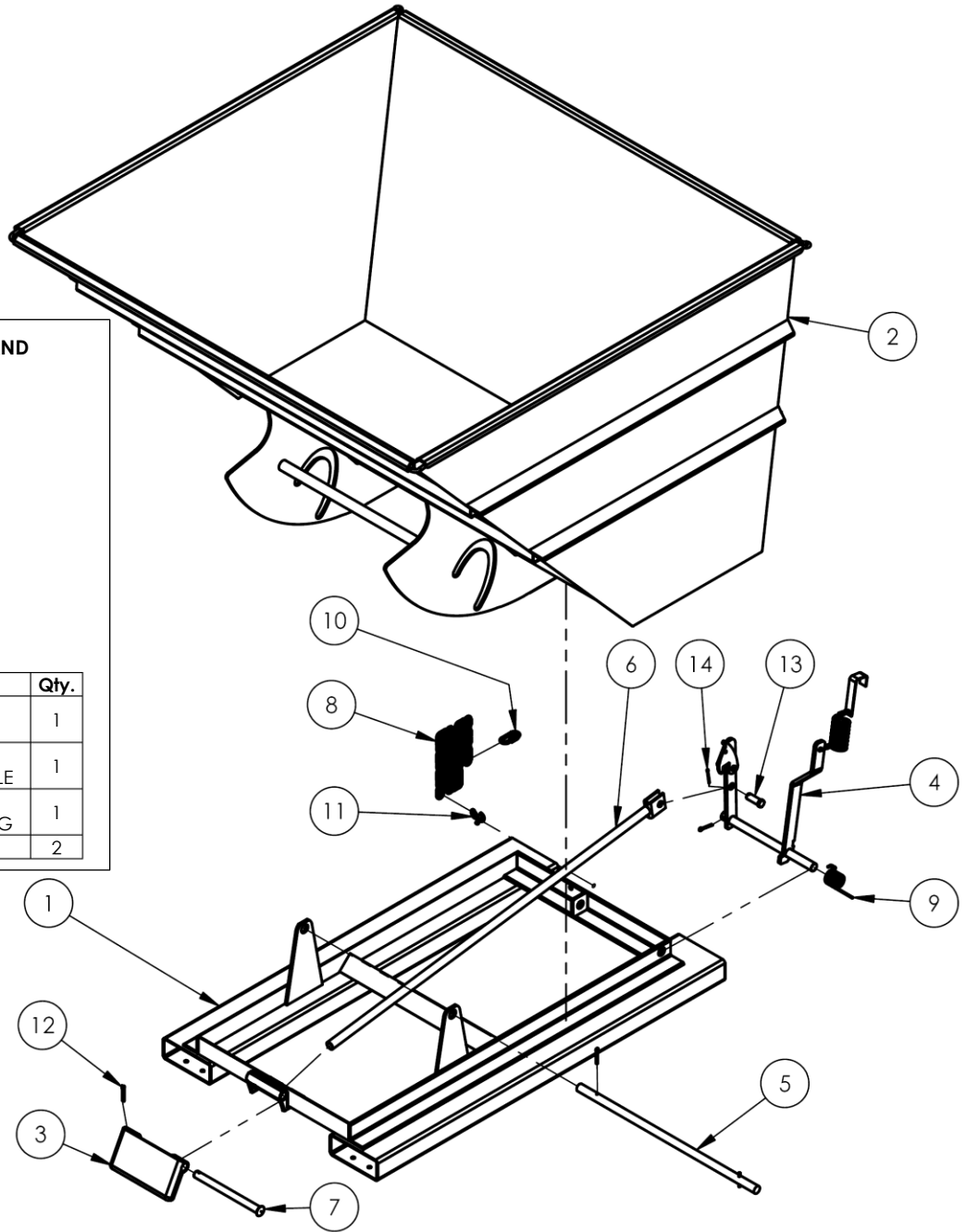


Item	Part no.	Description	Qty.
1	37-025-002	HANDLE, CHUTE RELEASE	1
2	37-145-001	SPECIALTY HARDWARE CABLE	1
3	43383	SWAGE SLEEVE Ø1/8" X 5/8" LONG	1
4	43403	1/4" WIRE CLAMP	2

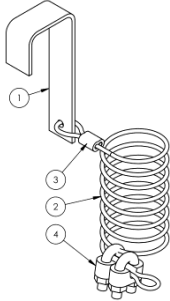
Item	Part no.	Description	Qty.	Item	Part no.	Description	Qty.
1	37-514-004	Frame, weldment, base	1	8	99-145-053	5/16" quick link	1
2	37-545-121	Weldment, chute, galvanized	1	9	37-146-005	Spring, torsion, hopper release	1
3	37-037-040	Bumper release for D-hoppers	1	10	99-145-037	5/16" chain 36" long	1
4	37-537-020	Weldment, lock, release, lever assembly, hopper	1	11	99-145-084	Lap link	1
5	37-612-006	Subassembly, pin, main connection pin	1	12	65127	Cotter pin, zinc plated	3
6	37-537-006	Release lever rod assembly	1	13	28-112-043	Pin, 3/4" x 2" long retaining clevis	1
7	37-112-006	Pin, bumper plate	1	14	65080	Extended prong cotter pin, zinc finish, 1/8" x 2"	1

D-250-HD-GAL HOPPERS EXPLODED VIEW & BILL OF MATERIALS

37-006-119



***37-514-044 RELEASE HANDLE AND CABLE REPLACEMENT KIT**

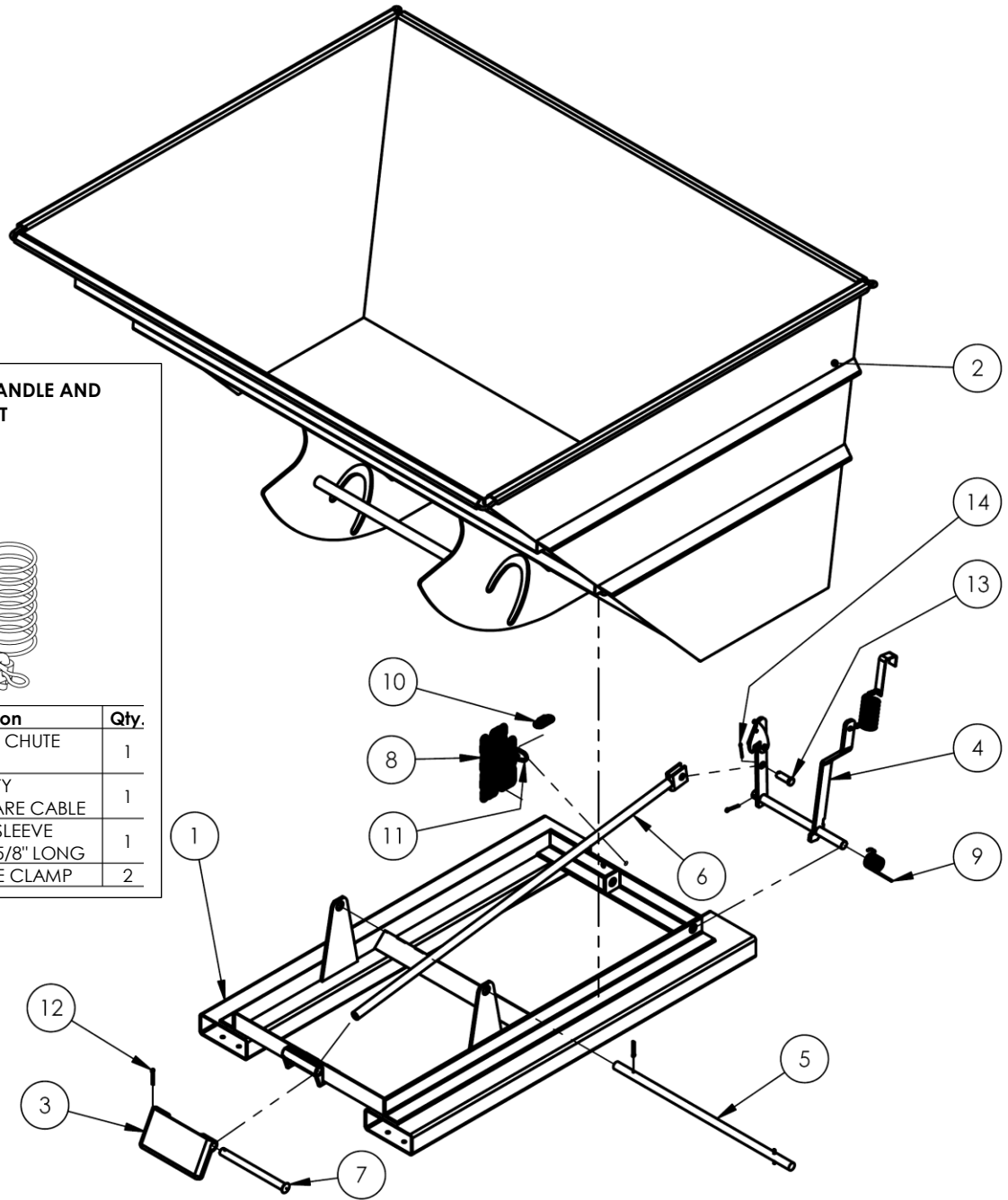


Item	Part no.	Description	Qty.
1	37-025-002	HANDLE, CHUTE RELEASE	1
2	37-145-001	SPECIALTY HARDWARE CABLE	1
3	43383	SWAGE SLEEVE Ø1/8" X 5/8" LONG	1
4	43403	1/4" WIRE CLAMP	2

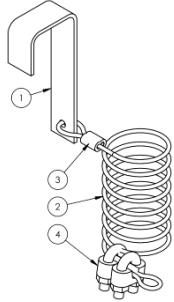
Item	Part no.	Description	Qty.	Item	Part no.	Description	Qty.
1	37-514-004	Frame, weldment, base	1	8	99-145-037	5/16" chain 36" long	1
2	37-545-114	Weldment, chute, galvanized	1	9	37-146-005	Spring torsion, hopper release	1
3	37-037-040	Bumper release for D-hoppers	1	10	99-145-053	5/16" quick link	1
4	37-537-020	Weldment, lock, release, lever assembly, hopper	1	11	99-145-084	Lap link	1
5	37-612-006	Subassembly, pin, main connection pin	1	12	65127	Cotter pin, zinc plated, 3/16" x 2"	3
6	37-537-006	Release lever rod weldment	1	13	28-112-043	Pin, 3/4" x 2" long retaining clevis	1
7	37-112-006	Pin, bumper plate	1	14	65080	Extended prong cotter pin, zinc finish, 1/8" x 2"	1

D-300-HD-GAL HOPPERS EXPLODED VIEW & BILL OF MATERIALS

37-006-120



***37-514-044 RELEASE HANDLE AND CABLE REPLACEMENT KIT**






Item	Part no.	Description	Qty.
1	37-025-002	HANDLE, CHUTE RELEASE	1
2	37-145-001	SPECIALTY HARDWARE CABLE	1
3	43383	SWAGE SLEEVE Ø1/8" X 5/8" LONG	1
4	43403	1/4" WIRE CLAMP	2

Item	Part no.	Description	Qty.	Item	Part no.	Description	Qty.
1	37-514-004	Weldment, frame, base	1	8	99-145-037	5/16" chain 36" long	1
2	37-545-115	Weldment, chute, galvanized	1	9	37-146-005	Spring, torsion, hopper release	1
3	37-037-040	Bumper release for D-hoppers	1	10	99-145-053	5/16" quick link	1
4	37-537-020	Weldment, lock, release, lever assembly, hopper	1	11	99-145-084	Lap link	1
5	37-612-006	Subassembly, pin, main connection pin	1	12	65127	Cotter pin, zinc plated, 3/16" x 2"	3
6	37-537-006	Release lever rod weldment	1	13	28-112-043	Pin, 3/4" x 2" long retaining clevis	1
7	37-112-006	Pin, bumper plate	1	14	65080	Extended prong cotter pin, zinc finish, 1/8" x 2"	1

SIGNAL WORDS

SIGNAL WORDS appear in this manual to draw the reader's attention to important safety-related messages. The following are signal words used in this manual and their definitions.

 DANGER	Identifies a hazardous situation which, if not avoided, WILL result in DEATH or SERIOUS INJURY . Use of this signal word is limited to the most extreme situations.
 WARNING	Identifies a hazardous situation which, if not avoided, COULD result in DEATH or SERIOUS INJURY .
 CAUTION	Indicates a hazardous situation which, if not avoided, COULD result in MINOR or MODERATE injury.
NOTICE	Identifies practices likely to result in product/property damage, such as operation that might damage the product.

SAFETY INSTRUCTIONS

Vestil strives to identify foreseeable hazards associated with the use of its products, but no manual can address every conceivable risk. Minimize the likelihood of injury by recognizing the hazards identified below and by inspecting and maintaining the product as instructed in [INSPECTIONS & MAINTENANCE](#) on p. 10. Acquire a copy of the latest version of ANSI B56.1 ("B56.1" or the "Standard"). The Standard is freely downloadable on www.ITSDF.org. Apply all portions of Part II "For the User" that concern the use of attachments and removable attachments. The following recommendations are intended to complement the provisions of the Standard.

WARNING

Risks of serious personal injuries or death.

- **Read & understand the entire manual before assembling, using, inspecting, or servicing the hopper.**
- Before this product may be used, U.S. Occupational Safety and Health Administration rule 1910.178(a)(4) and (a)(5) require that the owner/user: 1) Obtain written approval from a professional engineer or from the manufacturer(s) of all forklifts that will use the hopper; 2) Change all forklift capacity, operation, and maintenance instruction plates, tags, or decals accordingly; AND 3) Mark the forklift truck to identify the hopper and show the approximate weight of the truck and hopper combination at maximum elevation with load laterally centered. See <https://www.osha.gov/laws-regs/regulations/standardnumber/1910/1910.178>
- DO NOT use this hopper with rough terrain lift trucks or telehandlers (boom trucks). ONLY use this hopper with high lift fork trucks utilizing a vertical mast and carriage. DO NOT mount the hopper on stackers or manually propelled lift trucks.
- DO NOT operate the truck carrying this hopper on unimproved surfaces. Only operate on concrete or asphalt surfaces.
- Inspect the hopper as directed in the [INSPECTIONS & MAINTENANCE](#) section on p. 15. DO NOT use it unless it is in [SATISFACTORY CONDITION](#). See [RECORD OF SATISFACTORY CONDITION](#) on p. 15.
- DO NOT use the hopper if the carriage chain is damaged or missing.
- DO NOT elevate the hopper with a fork truck until it is securely connected to the carriage of the truck with the carriage chain. ONLY use this hopper with a powered forklift truck. DO NOT mount the hopper on stackers or manually propelled lift trucks.
- DO NOT fill the hopper beyond its maximum rated load (capacity). See [SPECIFICATIONS](#) document, p. 2-3. Capacity information also appears on the "model-specific label" applied to your hopper. See [LABELING DIAGRAM](#), p. 16. DO NOT exceed the load ratings or fill the hopper above the side walls. Injury to personnel or permanent damage to the equipment could result from overloading.
- NO ONE should travel under the hopper at any time while it is elevated.
- NEVER wrap the release cable around your hand, fingers, or any other part of your body!
- **Hoppers with lifting lugs** can be lifted with overhead hoists and cranes. DO NOT lift a hopper unless the chute is securely latched to the frame.
- DO NOT allow people to ride on or in the hopper.
- DO NOT use the hopper if any label is unreadable or missing. Apply replacement labels before returning the hopper to service. See [LABELING DIAGRAM](#) on p. 16.
- ALWAYS apply proper lift truck operation techniques learned during your training program. Before raising the hopper from the floor, tilt the (forklift) mast toward the cab of the truck to ensure that the hopper will not slide off of the forks.
- DO NOT modify the hopper without written approval from Vestil. Unapproved modifications might make the hopper unsafe to use & automatically void the [LIMITED WARRANTY](#) on p. 17.
- DO NOT dump the hopper UNLESS everyone in the vicinity is a safe distance from the dumping site.
- DO NOT dump the hopper unless the forklift is on an even, level surface.

LOADING THE CHUTE

Verify that the hopper chute is securely latched and locked to the base frame before filling it with refuse. Standard H-series hoppers are suitable for use indoors and outdoors and in most industrial and commercial settings. They are designed for use with rider forklift trucks. Put only non-hazardous wastes in the chute.

USING THE HOPPER

NOTE: US Federal OSHA rule 29 CFR 1910.178(m)(5)(iii), requires operators of powered trucks to fully lower the "load engaging means" (forks), neutralize truck controls, and set brakes whenever they dismount a lift truck and remain within 25ft of it. This self-dumping hopper allows lift truck operators to remain at the controls of their trucks throughout the dumping process. There is no need to dismount the lift truck while dumping the hopper.

Confirm that the hopper chute is latched to the base frame (i.e. NOT released and cannot rotate) before filling the chute with refuse. Standard self-dumping hoppers are suitable for use indoors and outdoors and in most industrial and commercial settings. They are intended to be used with rider forklift trucks as a means for dumping non-hazardous refuse into larger trash receptacles. The chute rotates through a 70° dump angle. D-series hoppers can be dumped in 2 ways: 1) manually by pulling the release cable; or 2) remotely by pressing the bumper plate against an object.

Step 1: Drive the lift truck forward and insert the forks into the fork tubes. Drive forward until either: 1) the tips of the forks begin to stick out of the ends of the tubes; or 2) if the forks are not long enough to extend all the way through the tubes, drive forward as far as possible.

Step 2: Securely attach the hopper to the fork carriage with the safety chain. Wrap the chain around part of the fork carriage; then connect the quick link at the end of the chain to a link in the chain with as little slack as possible.

WARNING DO NOT wrap the release cable around any part of your body, especially your hands, or attach the handle at the end of the cable to your clothing. If you do and the chute is released, you might be **seriously** injured.

Step 3: If you will release the chute manually by pulling the release handle, store the handle within reach of the forklift operator, for example by hooking it to the frame of the cab. Make sure that there is plenty of slack in the cable to avoid accidentally releasing/dumping the chute.

NOTE: If you will use the bumper plate mechanism to dump the chute, attach the handle to the frame of the hopper. Do not hook the handle to the chute because it could be torn from the cable when the chute is dumped.

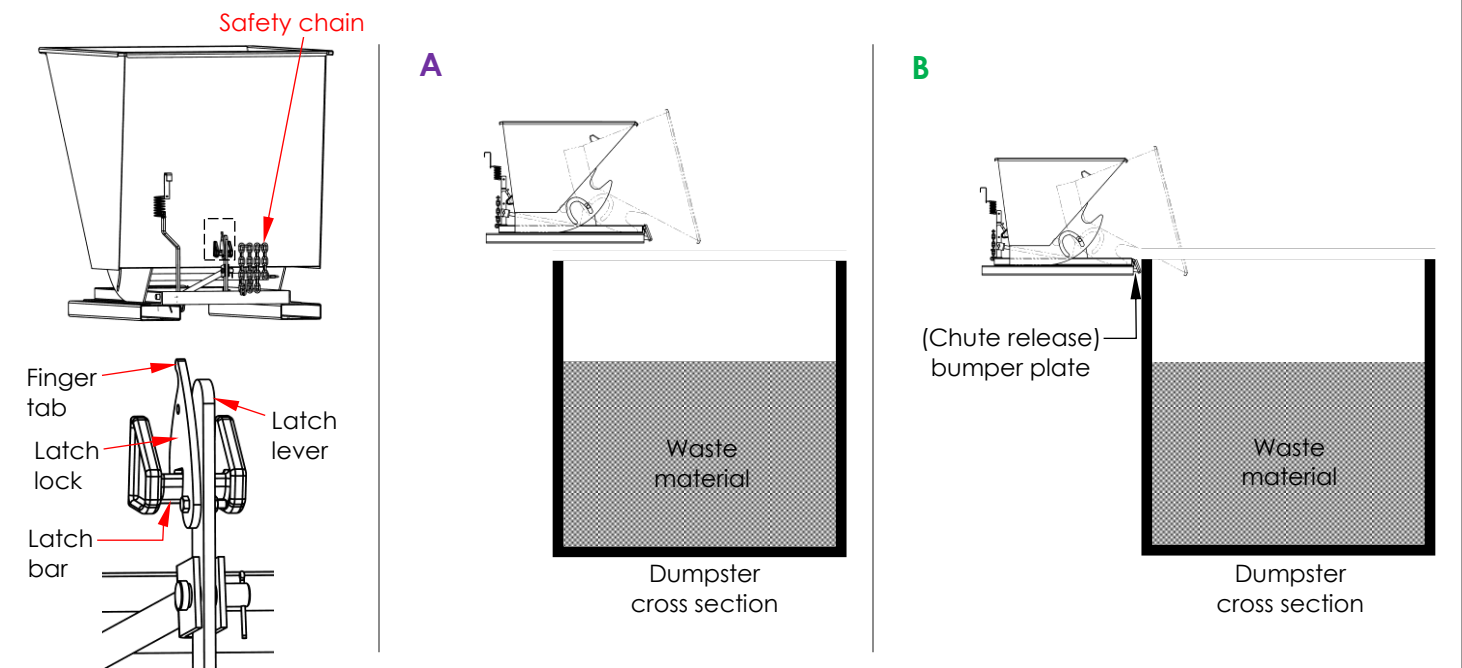
Step 4: Drive the forklift to the trash receptacle. Before raising the hopper, unlock the latch lever by pulling the finger tab until the lock disengages the latch bar (see diagrams with Step 5 below).

Step 5: Raise the forks and tilt the forklift mast forward (towards the dumpster). To dump the hopper:

A) Manually: elevate the entire hopper above the side wall of the dumpster (see diagram A) and pull the release cable

NOTE: NEVER wrap the release cable around your fingers, hand, etc.

B) Remotely: elevate the hopper so that the bumper plate will contact the side of the dumpster at or near the top (see diagram B). Drive the forklift toward the dumpster and press the bumper plate against the top of the side wall.

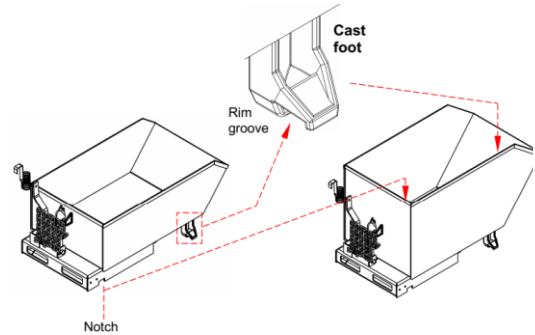


Step 6: Return the chute to the latched position. Tilt the forklift mast toward the cab and back away from the dumpster. The hopper should automatically return to the latched position. Confirm that the chute is latched to the base by raising the forks. The hopper should not dump. If necessary, lower the forks completely and manually latch the chute to the frame by pressing down on the rear wall of the chute until the latch lever engages the latch bar. Then, apply the latch lock.

STACKING HOPPERS

H-series hoppers are designed to stack on top of each other. Notches in the base and rim grooves in specially designed cast feet of one hopper engage the rim of the hopper supporting it as shown in the diagram to the right.

Hoppers of identical width can be stacked together, i.e. H-25 and H-50 series hoppers stack together. H-100 and H-150 series hoppers also stack together. Always unload hoppers before stacking them and NEVER create stacks of more than 3 hoppers. The bottom hopper must not be equipped with casters.



WARNING

DO NOT move stacked hoppers! Only move hoppers one at-a-time by properly mounting each hopper to your forklift as described in Step 1 on p. 14. All hoppers must be empty as long as they are stacked.

RECORD OF SATISFACTORY CONDITION (THE "RECORD")

Before using this hopper for the first time, create a record OF its appearance and features. Include descriptions of the chute, feet, base, carriage chain and quick link, pivot points and pivot point hardware, and the chute release mechanism. Release the chute. Describe how the unit looks and sounds as the chute rotates. Also describe the force necessary to release the chute using both the manual release lever and the cable. Secure the chute to the base and describe how the latch mechanism works. Thoroughly photograph the unit including all labels. Collate all writings and photographs into a single file. This file is a record of the unit in satisfactory condition. **Compare your results of all inspections to this record to determine if the unit is still in satisfactory condition.** Restore the hopper to satisfactory condition BEFORE using it again. Cosmetic changes, like damaged surface coating are not changes from satisfactory condition. However, touchup paint should be applied as soon as damage occurs to prevent rusting.

INSPECTIONS & MAINTENANCE

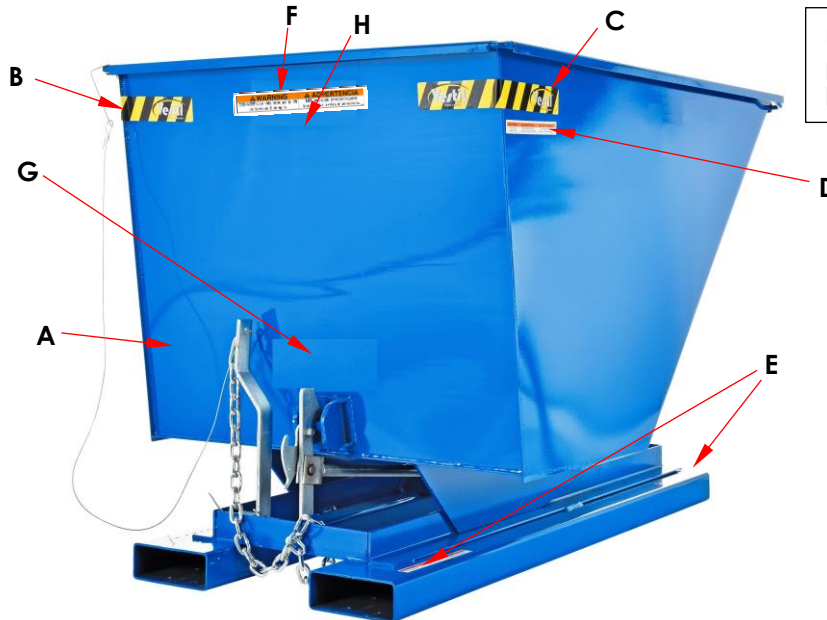
Inspections and repairs should only be performed by qualified persons. Compare the results of each inspection to the [RECORD OF SATISFACTORY CONDITION](#) (the "RECORD"). Do not use the hopper unless all parts are in satisfactory condition. Replace parts that are not in satisfactory condition before using the hopper again. **DON'T GUESS! If you have any questions about the condition of your hopper, speak with TECHNICAL SERVICE personnel.** The phone number is provided on the cover page of this manual. **Never make temporary repairs of damaged or missing parts.** Only use manufacturer-approved replacement parts.

Make a dated record of each inspection that includes observations and descriptions of repairs and/or replacements installed.

1. Pivot points: Look for excessive wear, warps, damage to pivot pins, cotter pins, or pin receivers.
2. Hopper chute and base frame: Examine the structure for damage, deformations, and corroded or excessively rusted areas.
3. Hardware (bolts, nuts, pins, cotter pins, retaining rings): inspect hardware for looseness and severe wear. Tighten loose connections and replace all damaged hardware.
4. Casters (if hopper is equipped with caster kit): check for looseness, excessive wear, or damage to the casters, caster bearings, mounting brackets, and hardware.
5. Release mechanism: Torsion spring should cause the latch lever to automatically recoil. The lever should firmly engage the release lock bar. Check the cable for frayed, thinned, or bird-caged regions. Replacement kit 37-154-044 (see applicable *EXPLODED VIEW*) includes a handle, cable, and 2 wire clamps (1/4"). To install a replacement handle & cable kit, loosen the nuts of both wire clamps & feed the free end of the cable through the clamps. Insert the end of the cable through the hole in the manual chute release lever. Feed the cable back through the clamps & then tighten all 4 nuts.
6. Moving parts: listen for unusual noises and watch for irregular movement. Remove dirt and debris from areas that could affect the hopper's dumping motion.
7. Carriage chain: examine the carriage chain, its point of attachment to the base frame, and the quick links for damage.
8. Labels: all labels must be firmly affixed in the locations shown in the [LABELING DIAGRAM](#) on p. 16.

LABELING DIAGRAM

The unit should be labeled as shown in the diagram. Label content and location are subject to change so your product might not be labeled exactly as shown. Compare this diagram to your RECORD OF SATISFACTORY CONDITION. Replace all labels that are damaged, missing, or not easily readable (e.g. faded). Order replacement labels by contacting the Replacement Parts Department online at <https://www.vestil.com/page-parts-request.php>. Alternatively you may request replacement parts and/or service by calling (260) 665-7586 and asking the operator to connect you to the Parts Department.



NOTE: Diagram shows (blue) powder coated unit. Galvanized D-hoppers are labeled identically.

A: Label 620 (left side in-line with manual release handle)

⚠ WARNING	
	<p>DO NOT wrap release cable around hand.</p> <p>Severe injury or amputation might occur if cable wrapped around body part when chute dumped.</p>
<p>STAY CLEAR of hopper when dumping.</p> <p>DO NOT hook manual release handle on hopper when using bumper release.</p> <p>Each person who uses this hopper should have access to the user manual. Copies of the manual can be downloaded from www.vestil.com.</p>	
⚠ ADVERTENCIA	
<p>NO AGARRAR el cable con la mano.</p> <p>Puede causar un daño severo o amputacion si el cable se envuelve alrededor del cuerpo al estar descargando la tolva.</p> <p>MANTENTE ALEJADO de la tolva al descargar.</p> <p>Nunca agarrar el gancho de la tolva.</p> <p>Cada persona que use la tolva debe de usar el manual, las copias se pueden descargar de la direccion www.vestil.com.</p>	

B: Label 1037 (CAUTION on side of hopper)

⚠ CAUTION	⚠ ATENCIÓN	⚠ ATTENTION
DO NOT PLAY ON OR AROUND	NO JUEGE ALREDEDOR	NE PAS JOUER SUR OU AUTOUR DE L'UNITÉ

C: Label 1023 (CAUTION on side of hopper)

⚠ CAUTION	⚠ ATENCIÓN	⚠ ATTENTION
DO NOT PLAY ON OR AROUND	NO JUEGE ALREDEDOR	NE PAS JOUER SUR OU AUTOUR DE L'UNITÉ

D: Label 220 (both sides)

⚠ WARNING	⚠ ADVERTENCIA	⚠ AVERTISSEMENT
KEEP CLEAR WHEN IN USE	MANTENGASE ALEJADO CUANDO SE ESTA OPERANDO	SE TENIR À DISTANCE LORS DU FONCTIONNEMENT

E: Label 208 (both fork tubes)

⚠ WARNING	⚠ ADVERTENCIA	⚠ AVERTISSEMENT
KEEP CLEAR OF PINCH POINT	MANTENGASE ALEJADO DEL PUNTO DE CORTE	SE TENIR À DISTANCE DU POINT DE PINCEMENT

F: Label 995

⚠ WARNING	⚠ ADVERTENCIA
DO NOT use this product to lift or transport people.	NO use este producto para transportar o elevar personas.

G: Model specific label (see tables)

Model / Modelo / Modèle	⚠ WARNING	⚠ ADVERTENCIA
D-	<ul style="list-style-type: none"> SECURELY ATTACH safety restraint to forklift Tilt load backwards to prevent hopper from sliding Distribute load evenly DO NOT exceed rated capacity Hopper MUST be locked when not dumping Disengage lock on hopper release before dumping hopper DO NOT wrap release cable around any body part 	<ul style="list-style-type: none"> ASEGURE la cadena de seguridad a la transpaleta Vuelque la carga hacia atras para prevenir que el carrito resbale Distribuya la carga uniformemente NO exceda la capacidad de carga tasada El depósito de alimentación debe ser cerrado al no descargar Suelte cerradura en la liberación de depósito de alimentación antes de descargar depósito de alimentación No envuelva cable de liberación alrededor de cualquier parte del cuerpo
Capacity / Capacidad / Capacité	lb. kg	
Serial No. / Serie No. / Serie No.		

H: Label 1210

⚠ WARNING	
Using this front end attachment exposes occupants & bystanders to risks of serious personal injuries or death.	
<ul style="list-style-type: none"> DO NOT use this front end attachment with rough terrain lift trucks or telehandlers (boom lifts). ONLY use this attachment with high lift fork trucks utilizing a vertical mast and carriage. DO NOT operate truck with attachment on unimproved surfaces. ONLY operate the truck with the attachment on concrete or asphalt surfaces capable of supporting the truck and a full capacity load. 	

I: Label 1049

⚠ WARNING	
Improper use of this fork attachment might result in death or serious injury.	
<ul style="list-style-type: none"> Using this front end attachment affects lift truck center of gravity. Before using this fork attachment, US Federal regulation 29 CFR 1910.178 requires you to contact the manufacturer of your lift truck and request: <ol style="list-style-type: none"> Written approval [29 CFR 1910.178(a)(4)] Markings for (fork) lift truck that: <ul style="list-style-type: none"> Identify the attachment, Give approximate weight of truck and attachment at maximum elevation with laterally-centered load. [29 CFR 1910.178(a)(5)] DO NOT use UNTIL lift truck is marked with corrected capacity tags 	
CAPACITY OF TRUCK & ATTACHMENT COMBINATION MIGHT BE LESS THAN CAPACITY OF ATTACHMENT. CONSULT TRUCK CAPACITY TAG LABEL.	

Model	Label
D-200-LD	540
D-200-MD	541
D-200-HD	545
D-250-LD	549
D-250-MD	549
D-250-HD	593
D-300-LD	549
D-300-MD	631
D-300-HD	546
D-300-HD-NA	549
D-350-HD	549
D-400-HD	549
D-500-HD	549

Model	Label	Model	Label
D-25-LD	549	D-75-LD	549
D-25-MD	549	D-75-MD	549
D-25-HD	549	D-75-HD	592
D-33-LD	549	D-100-LD	630
D-33-MD	549	D-100-MD	1050
D-33-HD	591	D-100-HD	644
D-50-LD	549	D-150-LD	549
D-50-MD	549	D-150-MD	549
D-50-HD	542	D-150-HD	544

LIMITED WARRANTY

Vestil Manufacturing Company ("Vestil") warrants this product to be free of defects in material and workmanship during the warranty period. Our warranty obligation is to provide a replacement for a defective, original part covered by the warranty after we receive a proper request from the Warrantee (you) for warranty service.

Who may request service?

Only a warrantee may request service. You are a warrantee if you purchased the product from Vestil or from an authorized distributor AND Vestil has been fully paid.

Definition of "original part"?

An original part is a part used to make the product as shipped to the Warrantee.

What is a "proper request"?

A request for warranty service is proper if Vestil receives: 1) a photocopy of the Customer Invoice that displays the shipping date; AND 2) a written request for warranty service including your name and phone number. Send requests by one of the following methods:

<u>US Mail</u>	<u>Fax</u>	<u>Email</u>
Vestil Manufacturing Company 2999 North Wayne Street, PO Box 507 Angola, IN 46703	(260) 665-1339 <u>Phone</u> (260) 665-7586	info@vestil.com Enter "Warranty service request" in subject field.

In the written request, list the parts believed to be defective and include the address where replacements should be delivered. After Vestil receives your request for warranty service, an authorized representative will contact you to determine whether your claim is covered by the warranty. Before providing warranty service, Vestil will require you to send the entire product, or just the defective part (or parts), to its facility in Angola, IN.

What is covered under the warranty?

The warranty covers defects in the following original, dynamic parts: motors, hydraulic pumps, electronic controllers, switches, and cylinders. It also covers defects in original parts that wear under normal usage conditions ("wearing parts"), such as bearings, hoses, wheels, seals, brushes, and batteries.

How long is the warranty period?

The warranty period for original dynamic components is 1 year. For wearing parts, the warranty period is 90 days. Both warranty periods begin on the date Vestil ships the product to the Warrantee. If the product was purchased from an authorized distributor, the periods begin when the distributor ships the product. Vestil may, at its sole discretion, extend a warranty period for products shipped from authorized distributors by up to 30 days to account for shipping time.

If a defective part is covered by the warranty, what will Vestil do to correct the problem?

Vestil will provide an appropriate replacement for any covered part. An authorized representative of Vestil will contact you to discuss your claim.

What is not covered by the warranty?

The Warrantee (you) are responsible for paying labor costs and freight costs to return the product to Vestil for warranty service.

Events that automatically void the Limited Warranty.

- Misuse;
- Negligent assembly, installation, operation or repair;
- Installation/use in corrosive environments;
- Inadequate or improper maintenance;
- Damage sustained during shipping;
- Collisions or other accidents that damage the product;
- Unauthorized modifications: Do not modify the product IN ANY WAY without first receiving written authorization from Vestil.

Do any other warranties apply to the product?

Vestil Manufacturing Co. makes no other express warranties. All implied warranties are disclaimed to the extent allowed by law. Any implied warranty not disclaimed is limited in scope to the terms of this Limited Warranty. Vestil makes no warranty or representation that this product complies with any state or local design, performance, or safety code or standard. Noncompliance with any such code or standard is not a defect in material or workmanship.

